

ACCORD CHEMEXPLORER

Do you know that your chemistry is somewhere on the system, but can't find it? Introducing Accord ChemExplorer - a utility to locate and track files containing chemical structures or reactions stored on a desktop PC or network drive.

SEARCHING

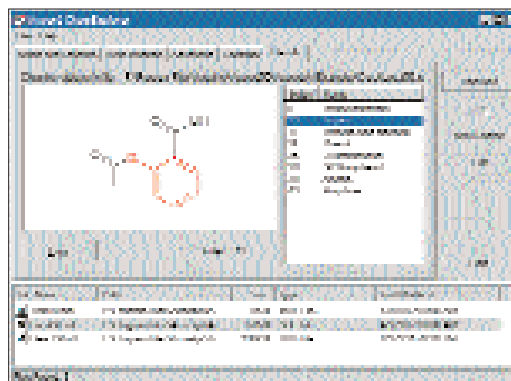
Accord ChemExplorer allows you to search for files containing chemical structures or reactions. It can even interrogate container applications such as Word documents and Excel spreadsheets, to find embedded chemistry objects. Not only can you search by file details, you can run a substructure, similarity or exact match search! Hits are previewed in the Accord ChemExplorer Results page with matching substructures highlighted in colour. If a file contains more than one chemistry object matching the query, you can preview each in turn. As you would expect, doubleclicking on a document name opens it.

USER FRIENDLY

Accord ChemExplorer looks, works and feels like the Windows Finder tool - except that, instead of searching for file information, it can locate files containing chemistry. It finds the chemistry by doing an exact, substructure or similarity comparison with a query structure. This query structure can be pasted in, taken from another file or entered as a SMILES string. You can then preview the matching structures on a file-by-file

basis in the Results page. They can be copied to the clipboard directly from Accord ChemExplorer or, by double clicking on a document name, the associated application will be invoked.

Context-sensitive menus are always accessible by right-clicking on an item. Hence, right-clicking on a file name offers a number of options to open the file or its containing folder. Similarly, right-clicking a structure lets you open it in a structure editor - choose from ISIS/Draw, ChemDraw or CASDraw (if installed). Outside of ChemExplorer, right-clicking on a folder or drive now offers the Find Chemistry option.



Results of a substructure search amongst files of various types. Relevant hits inside an SD file listed with the query substructure highlighted in red.

FILE TYPES SEARCHABLE

Accord ChemExplorer can search a wide range of file types, including:

- ISIS/Draw Sketch files
- ChemDraw files
- MDL Molfiles, inc. Rxnfiles
- SD & RD files
- Accord Chemistry &Data files
- CAS CXF files
- SMILES
- Accord for Excel files
- Document files, e.g. MS Word, containing embedded OLE chemistry objects: Accord, CASDraw, ISIS/Draw and ChemDraw objects are all readable.

SYSTEM REQUIREMENTS

Windows 98, Me, NT, 2000, XP.

To learn more about Informatics, go to accelrys.com/informatics