

Query, browse and enter data using a customizable forms interface

Search across multiple databases locally or on an Oracle server

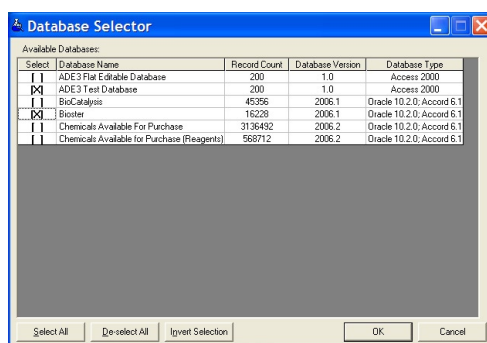
Browse hitsets from multiple data sources and view each record in its own database-specific form

Create your own databases directly from SD files

## Accord Database Explorer 3.0

Navigate your databases via a familiar and highly configurable forms-based interface in Accord Database Explorer 3.0—a new database client that provides you with powerful querying and browsing tools, enabling you to obtain the data you need rapidly and efficiently.

Accord Database Explorer 3.0 is a database client that enables you to browse, search and edit data from any database you choose. Both local and centrally-hosted databases can be accessed from the client and you can choose to query against single databases or multiple databases, enabling you to retrieve hits that span multiple data sources. Accord Database Explorer supports sub-structure, similarity and exact chemistry matching, along with support for Boolean and comparison operators, enabling you to construct powerful queries that return only the data that you need. Containing a Database Set-up Wizard to enable you to build databases directly from SD files, Accord Database Explorer provides a complete solution to your database browsing and searching needs.

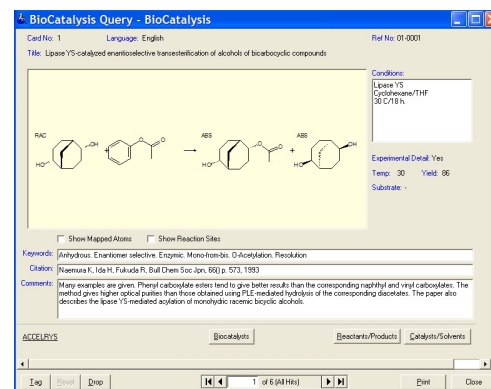


Selecting which databases to query against using the Database Selector. Any number of data sources can be made available in Accord Database Explorer 3.0. A mixture of local and centrally-stored databases can be searched and browsed in either Oracle or Microsoft Access format.

### Flexible Forms-Based Searching and Browsing

The configurable forms interface available in Accord Database Explorer makes it easy for you to create custom forms to access your databases. Use the query by form interface to enter a query

to search one or more databases. For browsing and entering data, build your own custom forms for individual databases. Choose which forms suit your needs best and browse your data with the form that works best for you. All forms can be built simply and quickly using the built-in Forms Designer. They can then be saved on your desktop for individual use or published to all users so that databases can be accessed using forms that are all based around the same design.



Browsing a reaction database using a browser form. Forms can be shared with other users or used privately. Accord Database Explorer 3.0's easy-to-use Forms Designer allows all users to create their own forms, enabling them to browse, query and enter data using forms that best suit their needs

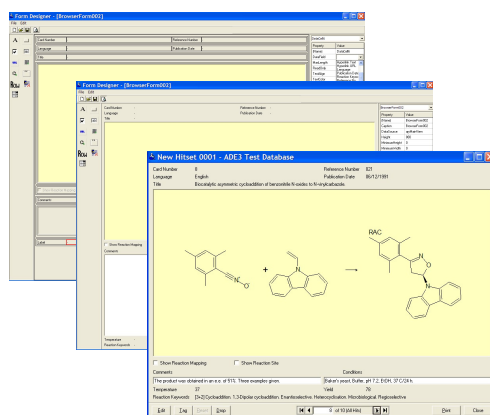
### Built-in Forms Designer

The Accord Database Explorer Forms Designer enables you to build forms interactively using an intuitive, drag-and-drop interface. Forms for data querying, browsing and entry can all be built using the same designer interface. Before use, you can fine tune form design and preview their appearance and resizing behaviour, ensuring that forms are configured to make data entry, browsing and querying as efficient and ergonomic as possible. Accord Database Explorer

3.0 provides a number of flexible elements for producing powerful, interactive forms, including:

- Chemistry cells for viewing individual chemistry records (such as reactions and molecules)
- A chemistry grid viewer for viewing multiple chemistry objects and associated data in a configurable, spreadsheet-like view
- Nested forms for letting you 'drill-down' to see associated data in more detail
- Check-boxes for creating forms where information such as reaction mapping can be toggled on/off or used to show/hide Boolean data
- Hyperlink cells for linking to relevant web pages, such as the website of the supplier of the compound that you are browsing
- Precise control over resizing behavior of individual elements within the form to ensure optimal presentation of data
- Control over the formatting, layout and color of individual form elements to ensure optimal usability

Custom forms can be used privately or they can be published for sharing with other users. Individual users can choose to build their own forms for use with a particular database, or they can use a standard layout.



*Building forms for browsing data using the Accord Database Explorer Forms Designer. From left to right: building a form using the graphical drag-and-drop interface; previewing the layout of the form prior to saving the final version; using the completed form for browsing a reaction database.*

### Powerful Hitset Management

Accord Database Explorer 3.0 makes it easy for you to browse hitsets containing data from one or more data sources. Individual hitsets can be displayed in a configurable grid or spreadsheet-like view or viewed using a browser form. If the hitsets contain records from multiple data sources, each hit will be displayed using the browser form associated with the appropriate data source, ensuring that each record is always displayed optimally and completely. All hitsets support record tagging and dropping, making it easy for you to manually filter out records that are of interest or exclude records that fail to meet a certain condition; for example, you may want to drop records that have a yield of less than or equal to 80%. Hitsets can also be combined using Boolean logic, sorted into ascending or descending order using multiple data fields, and exported for sharing with other users or for analysis in applications such as Accord for Excel.

### Import, Create and Edit Your Own Databases

Accord Database Explorer 3.0 makes it easy for you to create desktop databases directly from SD files. The Accord Database Set-up Wizard enables you to take a simple SD file and build a Microsoft Access format database that can be browsed and searched directly within Accord Database Explorer. Existing Access-based databases can be made accessible within Accord Database Explorer using the wizard.

For situations involving more complex, hierarchical databases, Accelrys Client Services can perform database migrations directly into Accord Database Explorer, or we can just get you started on an initial migration and provide additional tools to help you do the rest.

Once you have created your database, additional data records can be added using database-specific, custom data entry forms that are produced in the Forms Designer, making it easy for you enter data simply and efficiently.

### Key Features

- **Configurable forms-based interface** for querying, browsing and entering data
- **Built-in Forms Designer** for designing forms for any database you choose using a simple drag-and-drop interface
- **Local database creation** for creating your own databases directly in Microsoft Access format from simple SD files
- **Advanced hitset handling** for saving, combining and browsing hitsets, and sharing hitsets with other users
- **Multiple database search capabilities** for searching combinations of local and server versions
- **Sophisticated query building** for combining multiple search terms with Boolean and comparison operators, and performing exact, sub-structure and similarity chemistry searching (similarity searching only available in Oracle-based databases)
- **Atom mapping** for true reaction searching
- **Markush support** for searching using Markush query structures and for querying stored Markush targets (requires the Accord Chemistry Cartridge and Markush Cartridge Extension)
- **Compatibility with leading structure editors** for using editors such as ISIS/Draw, ChemDraw and CAS Draw
- **Support for databases stored in Oracle and Microsoft Access** for supporting both local and server-based databases (Oracle databases require the Accord Chemistry Cartridge)
- **Powerful data exporting options** for exporting your data into Accord for Excel or to any other application that supports RD or SD files
- **Built-in report editor** for creating custom report summaries of your data and publishing them as pdfs

### Platform Requirements

Accord Database Explorer is designed for Microsoft Windows 2000 and Windows XP and supports Microsoft Access and Oracle format databases. Oracle databases must be indexed with the Accord Chemistry Cartridge version 6.0 or later (available separately) in order to be searchable with the Accord Database Explorer. Accord Chemistry Cartridge supports the Oracle 9i and 10g database servers running on a variety of operating systems, including Microsoft Windows 2003 Server, Red Hat Enterprise Linux and Sun Solaris.